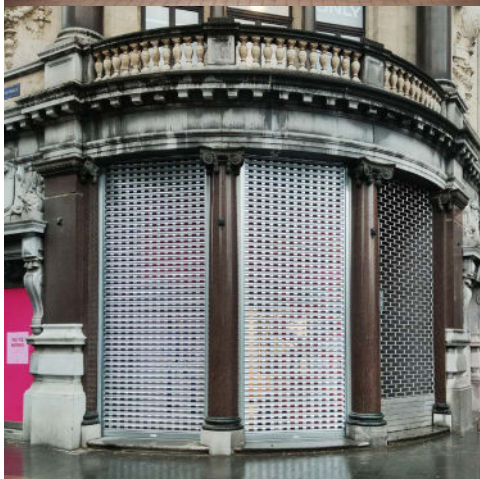


CLOSURES FOR SHOPS & SHOPPING CENTRES

TRANSPARENT ROLLER SHUTTERS - ROLLER GRILLES -
PERFORATED ROLLER SHUTTERS - PUNCHED ROLLER SHUTTERS -
STEEL ROLLER SHUTTERS - SCISSOR GATES



TRANSPARENT ROLLER SHUTTERS

Closing a shop is easy with one or more closures in the form of doors. However, it is also possible to close off the entrance with a roller shutter. When visibility needs to remain optimal and a shop wants to leave a beautiful view on the interior even after closing time, a transparent roller shutter is the ideal solution. A combination of high-grade steel, sleek aluminium and crystal-clear polycarbonate give a beautiful look. The transparent roller shutter can span a shop closure up to around 10 metres wide.

Advantages transparent roller shutters:

- Transparency approximately 95%, custom-made from polycarbonate panels.
- Transparent roller shutters can be rolled up vertically on a shaft driven by an electric motor.
- Shop appearance is maintained even after closing time.
- Aluminium and steel parts can be supplied in any RAL colour.

If visibility and light must be optimal even after closing time, a transparent roller shutter is the ideal barrier for the entrance to your retail building. We will be happy to advise you on the possibilities!

Mail: info@securityshutters.eu



Transparent profiles



ROLLER GRILLES

Shop windows are beautifully decorated to capture the customer's imagination. Even after closing time, shop design can do their job by applying roller grilles from Jansen Security Shutters. They have an open structure with 70-75% transparency. These roller shutters are ideally suited for securing shops, showrooms and partitions of separate business premises.

By applying a roller grill, the visual impact of securing your business is kept to a minimum, while still being able to meet requirements up to the highest class of insurance. All roll-up grilles are matched to the requirements and produced to size from hollow or solid tubular material or flat curved strips and are suitable for almost every situation, both indoors and outdoors.

Advantages roller grilles:

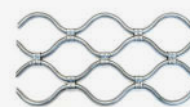
- Steel, aluminium or stainless steel material.
- Can be used up to very large areas, providing a custom made solution for almost all situations.
- Widths up to 16 metres for both indoor and outdoor situations.
- Visual impact remains limited, visibility up to 70-75%.
- Available in all RAL colours.

Do you want to realise a shop closure over 10 metres width? Ask us about the possibilities for applying a roller grill.

Phone: +32 (0)78 48 05 82



Roller grill profiles



PERFORATED SHUTTERS

Closing a shop can be done in various ways, with a large entrance often featuring a roller shutter to close off the entire façade at once. In shopping centres, we often see that a roller shutter with micro-perforation is a requirement because of fire safety, as they provide a view through, into the shop. Perforated roller shutters have a special structure where, with the right lighting from inside, a very transparent feel can be achieved. In addition a perforated roller shutter retains the advantages of a steel roller shutter and protects the shop from vandalism.

Perforated roller shutters are possible for all desired dimensions up to approximately 10 metres width with various slat sizes and slat thicknesses, tailored to your specific situation. Perforated roller shutters are realised in our own production and it is possible to incorporate your logo or company name in the perforation over several slats. All steel parts can be finished in any desired RAL colour.

Advantages perforated roller shutters:

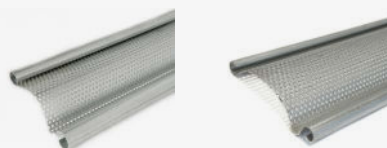
- Elegant and robust appearance.
- Shop closure and burglary prevention in one.
- Driven by an electric motor with corresponding power.
- Name and/or logo incorporated in the perforation across several slats.
- All RAL colours available.

If you are curious about the possibilities of perforated roller shutters, we would be happy to tell you more. Feel free to inquire about the possibilities for your retail location.

Mail: info@securityshutters.eu



Perforated profiles



PUNCHED ROLLER SHUTTERS

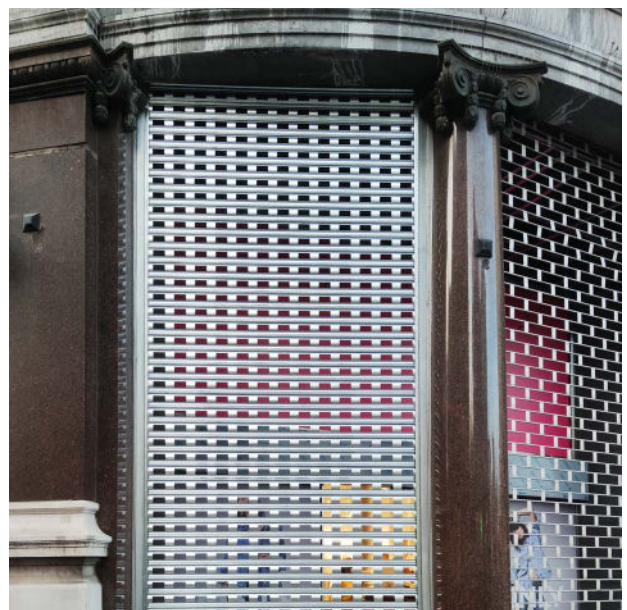
Within the production process of Jansen Security Shutters, we have the possibility of manufacturing steel slats with punched holes. These punched slats are very suitable for shop shutters and give a playful look. With the sturdiness of a steel armour while still allowing light and air to pass through, this type of slat offers a nice alternative to full steel slats or perforated slats. In addition, it is also possible to combine punched slats with steel slats or possibly perforated slats.

Advantages punched roller shutters:

- A roller shutter with punched slats gives up to 50% transparency.
- Six punched holes per metre of slat.
- The size of a punched hole is 80x40mm.
- Punched slats can be combined with full steel or perforated slats.
- Punched roller shutters are available in all RAL colours.

Would you like to know more about punched roller shutters or a combination? Then feel free to contact us for more information.

Phone: +32 (0)78 48 05 82



Punched profiles



STEEL SHUTTERS

On locations where visibility or lighting after closing time are not required, solid roller shutters can be used. These can be steel or aluminium roller shutters. In practice, the steel roller shutter is often chosen because of its robust appearance and security against burglary.

Closed roller shutters take over the function of a door with an extra safety factor for your shop in a shopping mall, or provide a safe and strong barrier for a company on an industrial estate, premises along main roads to highways or for closing off a counter or sports canteen. Steel roller shutters provide a barrier to unwanted visitors, and they are also the right product to protect your property, windows and doors in vandalism-prone areas. To give a closed roller shutter a slightly different look, it is possible to make a combination of solid steel slats, perforated slats or slats with punched holes.

Advantages steel roller shutters:

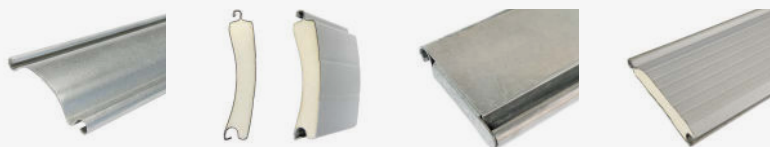
- Short delivery times are possible.
- Varied range of slat profiles and slat thicknesses.
- Slat thickness and bearing capacity are matched to the size and environmental factors.
- Widths up to 10 metres.
- All RAL colours possible.

Looking for an effective shop barrier that keeps unwanted visitors out? Then enquire about our solid steel roller shutters.

Mail: info@securityshutters.eu



Steel profiles



SCISSOR GATES

Scissor gates, also known as folding gates, consist of retractable grilles ideally suited for securing facades and doors. It is the alternative for roller shutters and roller grilles. Retractable scissor gates are sturdy and aesthetically designed and ideal for situations where the maximum usable height is limited, due to low ceilings or high doors. Whereas a roller shutter quickly requires 400 mm at the top, a scissor gate often needs just 50 mm. These folding gates move horizontally and slide together to form compact packages. They are manually operated and are the ideal closure for a facade or a canopy for example: shops, showrooms, warehouses, shop-in-shops or carports.

Advantages scissor gates:

- Break-in-resistant and vandalism-proof thanks to sturdy, heavy-duty construction.
- Open structure with free view, ventilation and attractive appearance.
- Compact installation dimensions.
- Largely interference-free due to the absence of electrical controls.
- Are flexible in design (centre lock, edge lock or a combination).
- Different types available and powder coating in any desired RAL colour.

Did you know that it is possible to build in a scissor gate consisting of 1 or 2 parts? If you would like to know more about this aesthetic barrier for your premises, please contact us.

Phone: +32 (0)78 48 05 82



Scissor gates grill profiles



Jansen Security Shutters • PO BOX 3437 • 5203 DK 's-Hertogenbosch
+32 (0)78 48 05 82 • info@securityshutters.eu • www.securityshutters.eu

